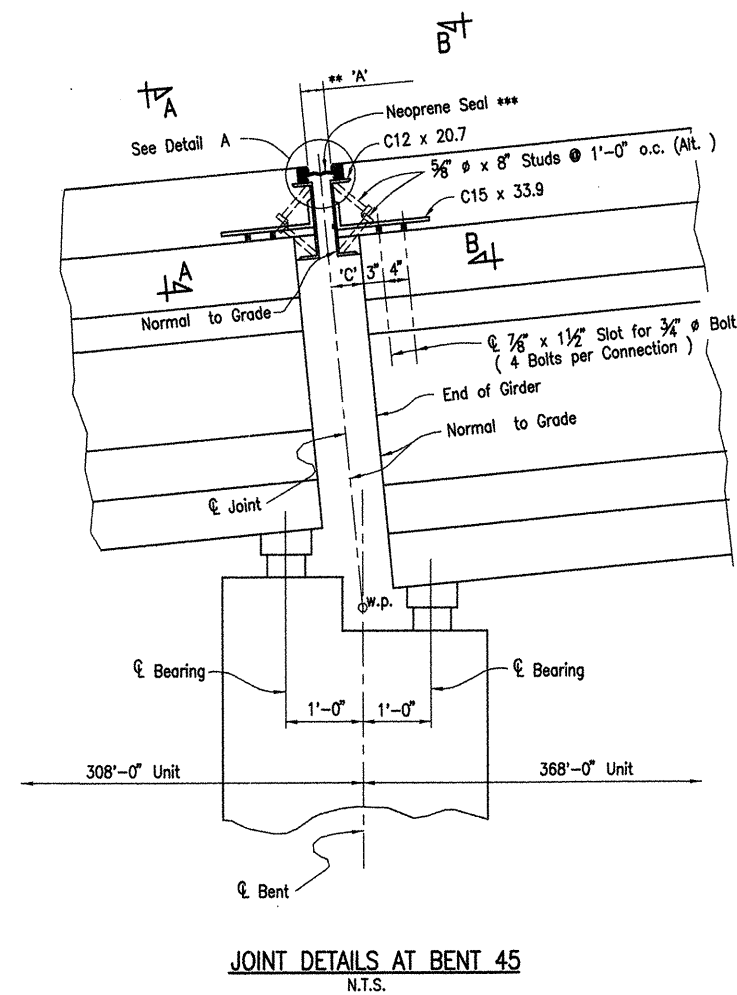
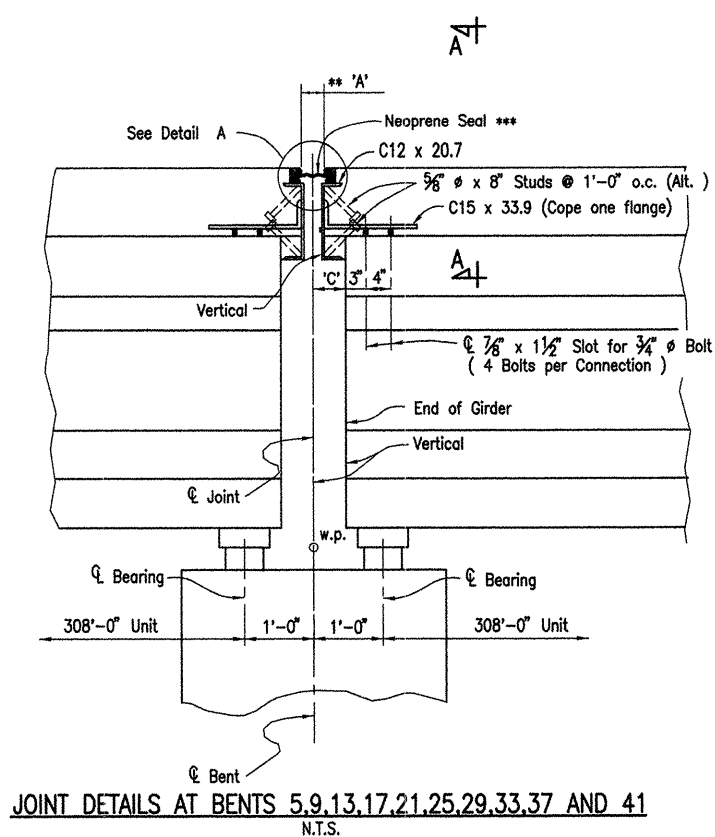
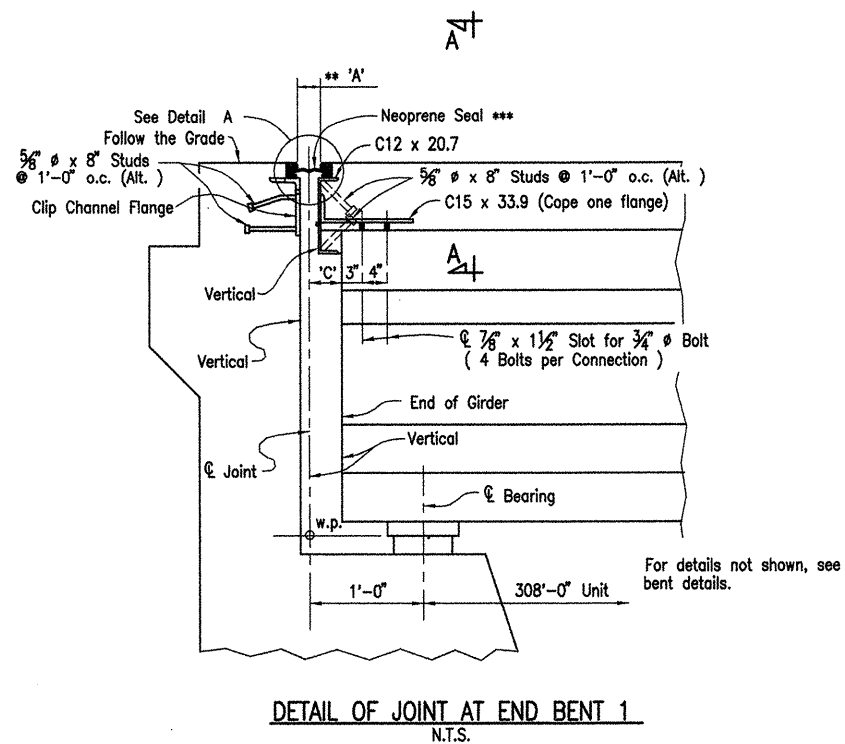


COMPANY: 1999 JOBS\99-044 AHTD\WHITRIVER\JOB 110395\expint1 Alt1 ACAD SCALE: 3/4"=1'-0"

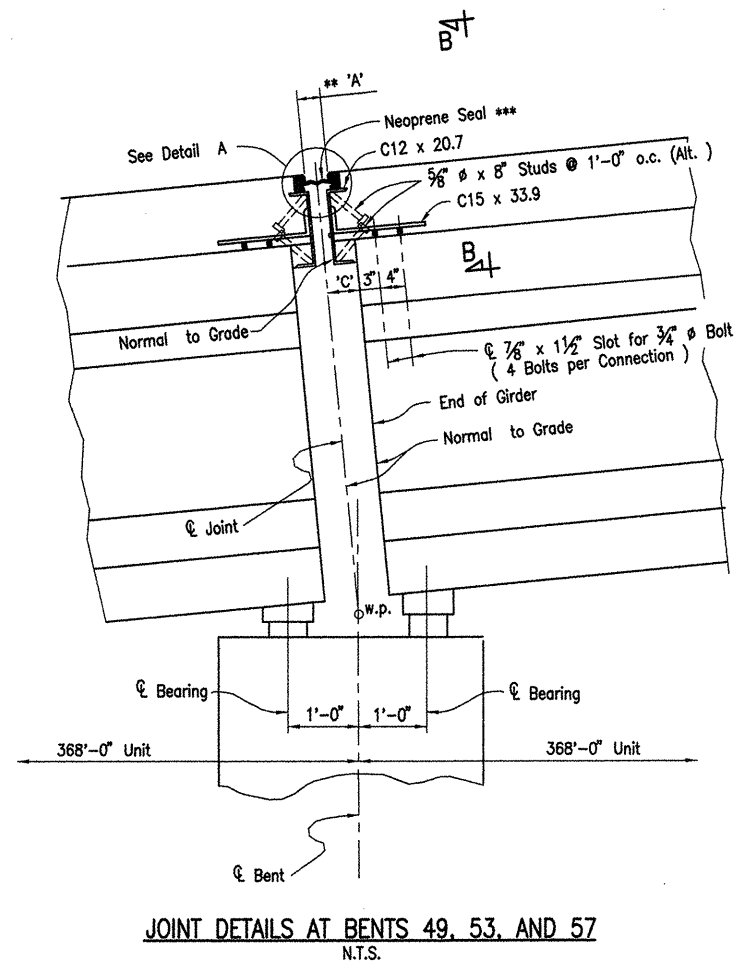
DATE REVISED	DATE FILMED	DATE REVISED	DATE FILMED	FED. ROAD NO.	STATE	FED. AID PROJ. NO.	SHEET NO.	TOTAL SHEETS
9-12-11					ARK.			
				JOB NO.	110395		105	203
				06830	EXP. JOINT		47095	



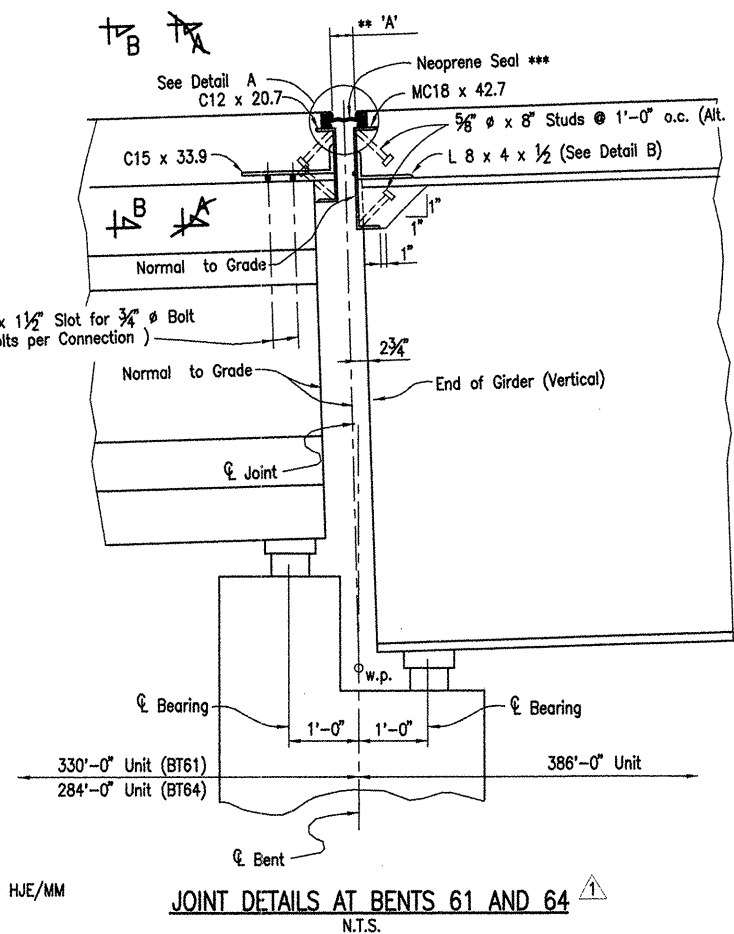
Note: For Sections A-A and B-B, See Dwg. No. 47097
For Details A and B, See Dwg. No. 47097
See Dwg. No. 47097 for Strip Seal Joint Data Table

** 3" Strip Seal Joints shown on dwg's 47012 to 47020 represent the 3" Jt. @ 60°F.

*** Strip Seal Joint Components shall be capable of moving between the Amin. @ 120°F and Amax. @ 0°F.

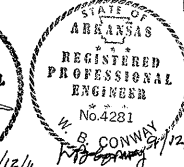
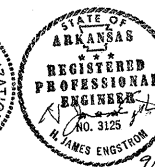


Revised Joint Details at Bents 61 & 64 by HJE/MM
GPT 9-12-11



ALTERNATE NO. 1

DETAILS OF EXPANSION JOINTS
(SHEET 1 OF 5)



WHITE RIVER STR. & APPRS.
(CLARENDON) (PH III) (F)
MONROE COUNTY

ROUTE 79 SEC. 13

ARKANSAS STATE HIGHWAY COMMISSION
LITTLE ROCK, ARK.

Engstrom/Modjeski and Masters, Inc.

DRAWN BY: PMR DATE: Nov. 07 FILENAME: b1103951_e01
CHECKED BY: GPT DATE: Nov. 01 SCALE: 3/4"=1'-0"
DESIGNED BY: YO DATE: Nov. 01
BRIDGE NO. 06830 DRAWING NO. 47095